

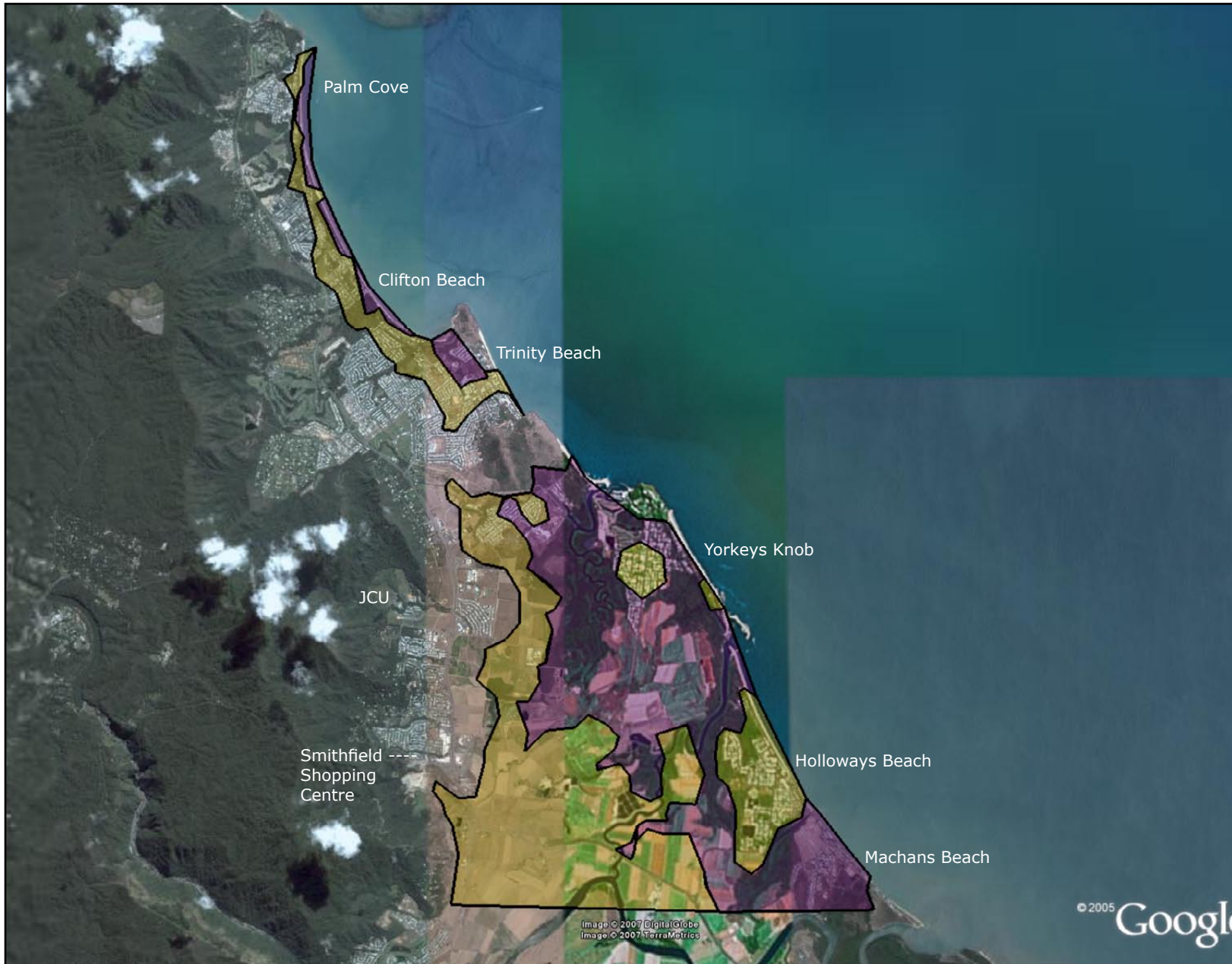
Preliminary Storm Surge Map - Cairns Northern Beaches

Purple tint: small surge (~2 m high) would flood these areas.

Yellow tint: larger surges (2-6 m surges) would flood these areas.

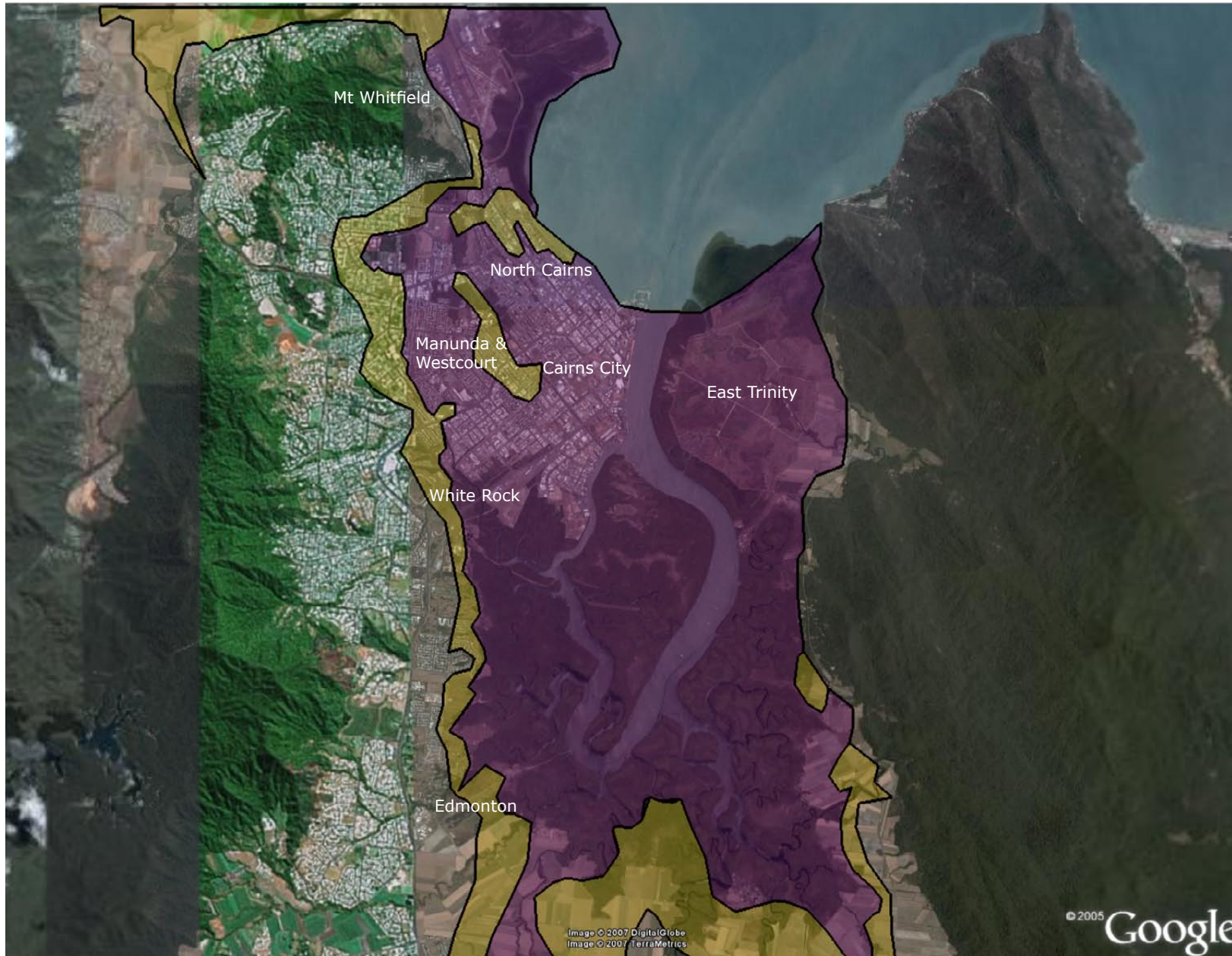
Disclaimer: This map is rough guide only. *FutureOfCairns* does not accept any responsibility for the content of the this map or for any losses that may occur due to information obtained from this map.

New mapping is being developed - check with Cairns City Council for updated mapping. If you can't find it, ring a councillor and ask why?



An approximation of Cairns City Council storm surge mapping (Dec 2006) over Google Earth Imagery. There appear to be some significant inaccuracies in the mapping and some areas will be more at risk of storm surge/tsunami than is depicted. However the maps do provide a very general view of which areas would need to be evacuated in the event of a storm surge or tsunami of moderate size.

Preliminary Storm Surge Map Cairns City



Purple tint: small surge (~2 m high) would flood these areas.

Yellow tint: larger surges (2-6 m surges) would flood these areas.

Disclaimer: This map is rough guide only. *FutureOfCairns* does not accept any responsibility for the content of this map or for any losses that may occur due to information obtained from this map.

New mapping is being developed - check with Cairns City Council for updated mapping. If you can't find it, ring a councillor and ask why?

An approximation of Cairns City Council storm surge mapping (Dec 2006) over Google Earth Imagery. There appear to be some significant inaccuracies in the mapping and some areas will be more at risk of storm surge/tsunami than is depicted. However the maps do provide a very general view of which areas would need to be evacuated in the event of a storm surge or tsunami of moderate size.